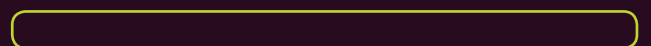


burren**b**eo**t**r**u**st
connecting people and place



Burren**b**eo
Trust
Impact
Report 2025

Rooted in Place, Growing in Impact





Connecting all of us to
our places and our role in
caring for them.



Burrenbeo Trust

is an independent charitable organisation dedicated to its mission of *connecting* all of us to our places and our role in caring for them.



A message from Áine Bird, Burrenbeo Trust CEO

2025 marked a year of significant progress for the Burrenbeo Trust, defined by growing engagement, expanded programme delivery, and strengthened connections between people and place. Across the Burren and throughout the country, our work continued to demonstrate how informed communities can drive meaningful stewardship of natural and cultural heritage.

CORE INITIATIVES

The Hare's Corner, Heritage Keepers, and Farming for Nature — remained central to our mission. Each offered practical, place-based pathways for individuals, schools, farmers, and community groups to enhance biodiversity, celebrate heritage, and adopt sustainable land management practices. The expansion of our staff team further increased programme capacity and ensured we could meet rising demand for learning and engagement opportunities.

Bookending our year, the flagship events *Burren in Bloom* and the *Winterage Weekend*, both continue to play a vital role in bringing heritage to life for diverse audiences. A major milestone was the launch of the inaugural *Burren Archaeology Festival*, which showcased Ireland's ancient landscapes through expert-led talks, field

excursions, and family programming. Another highlight was the publication of *The Hare's Corner book*, filled with inspiring stories of those who have made space for nature. In parallel, advancements in ReFarm laid important groundwork to scale nature-positive practices on farmland across Ireland.

Our collective efforts resulted in measurable impact:

- *2,800+ attendees at festivals and events*
- *1,919 participants in learning programmes*
- *82 community action projects completed through Heritage Keepers*
- *1,471 biodiversity measures delivered through The Hare's Corner*
- *1,100+ volunteer hours contributed across our activities*

As we look to 2026, Burrenbeo Trust will continue to expand its educational reach, deepen grassroots engagement, and strengthen national conversations around stewardship. The year ahead presents an opportunity to build on this momentum and further embed an ethic of caring for place in communities across Ireland.





Our vision is that the Burren
is an *internationally*
recognised exemplar of
community stewardship.



Our year in Numbers 2025

EVENTS / PARTICIPATION

Walk and Talk Attendances 2025 1,684 2024 983 2023 837	Outreach Participants 2025 765 2024 632 2023 641	Festival Attendances 2025 1,623 2024 1,943 2023 1,801
Learning Programme Participants 2025 1,919 2024 1,729 2023 1,165	Burrenbeo Conservation Volunteers Attendances 2025 298 2024 632 2023 641	New Farming for Nature Ambassadors 2025 12 2024 12 2023 10
Heritage Keepers Action Projects Completed 2025 82 2024 58 2023 40	Hare's Corner Measures Taken 2025 1,471 2024 1,062 2023 302	Reform Actions Completed 2025 88 2024 N/A 2023 N/A

MEMBERSHIP

	New Members	Renewals	Totals	
2025	244	530	774	▶
2024	164	493	657	▶
2023	125	629	754	▶

Member Location Breakdown	
Burren	24%
Regional	36%
National	32%
International	8%
Burren	23%
Regional	38%
National	29%
International	10%
Burren	28%
Regional	35%
National	27%
International	10%

SOCIAL MEDIA

Social Media Followers	Online Webinar Attendances	Youtube Views	Website Users
2025 58,479	2025 699	2025 349,008	2025 269,347
2024 57,425	2024 725	2024 51,524	2024 116,433
2023 50,402	2023 671	2023 42,994	2023 94,677

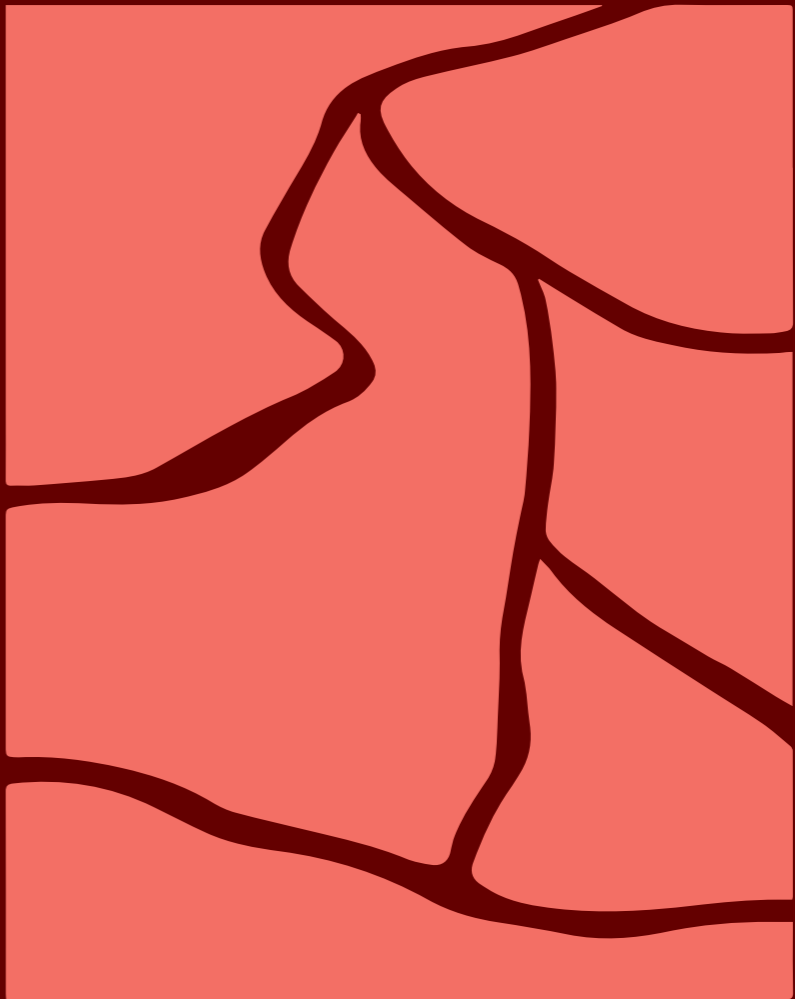
SPEND

Figures up until November end, 2025

Spent Locally: **€541,712.99**

Spent Nationally: **€633,401.55**





Recognising and *valuing* the insights, traditions, and experiences embedded in the community.



Strategic Priorities

to create an efficient,
impactful, grounded and
resilient organisation.



STRATEGIC PRIORITIES

- To create an efficient, impactful, grounded and resilient organisation
- To promote, enable and support community stewardship and active conservation in the Burren
- To better connect communities with their place and their planet, and their role in its care
- To advocate for the Burren and for community stewardship here and elsewhere; to build strategic alliances in order to do so more efficiently and effectively

Strengths of the Burrenbeo Trust approach

Holistic view of place

Rather than considering the built, natural or cultural heritage of our places in isolation, Burrenbeo programmes look to identify the interconnections that exist.

Supporting action

There is an increasing desire to take meaningful action for our places. Programmes which support local action are central to Burrenbeo Trust.



Valuing community knowledge

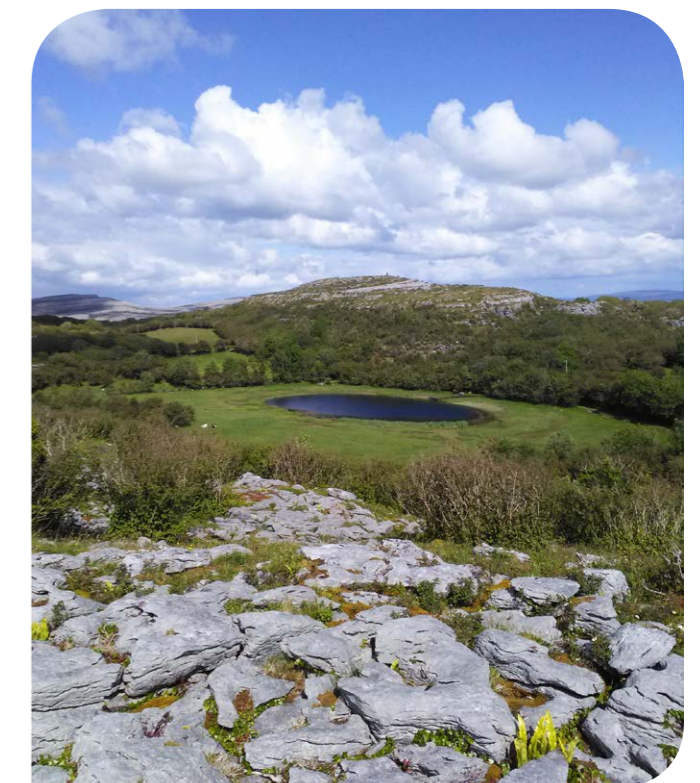
Recognising and valuing the insights, traditions, and experiences embedded in the community fosters a more comprehensive understanding of the challenges and opportunities at hand.

Engaging a wide audience

Burrenbeo work to deliver programmes to as wide an audience as possible – from school children to farmers, community groups to educators, we hope to find a way of engaging with the whole community.

Focus on quality

We are keen to ensure that our approach follows good practice models, is based on research and that we continue to support and audit any actions after they have been completed.



Our Programmes

The following are some of the main programmes delivered by Burrenbeo Trust.

~ There are also some smaller programmes which support these and are not listed.



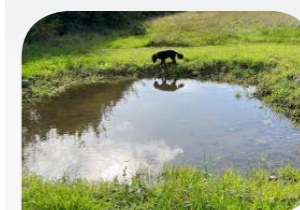
Members Walks
Monthly walks throughout the year to explore different aspects of the Burren's heritage.



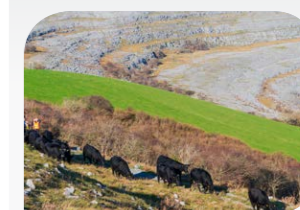
Farming for Nature
Celebrating and supporting those looking to improve conditions for nature on their farms.



The Hare's Corner
Supporting landowners with biodiversity actions, including mini woodlands, orchards, ponds and plans for nature.



Burren Winterage Weekend
Recognising the cultural heritage and farming traditions of the area.



Communications
Websites, newsletters, press engagements, social media and more sharing the Burrenbeo message.



Our Impact on Culture & Heritage

Conservation Volunteers
Volunteers focussing on archaeology conservation, rare species monitoring, managing scrub and more.



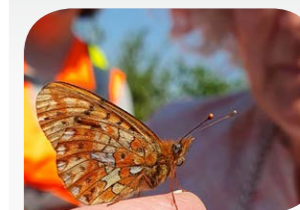
Tea Talks
Through the winter months bringing a range of speakers to the local community.



Heritage Keepers
Empowering schools and communities to learn about and take action for their local heritage.



Burren in Bloom
A spring time celebration of biodiversity in the Burren.



The Calf & Cuckoo
A programme for Burren primary schools with school visits and a fieldtrip.



Outreach
Providing talks and fieldtrips for visiting groups and researchers.



Members Webinars
Year round talks from a variety of speakers on the Burren's natural, cultural and built heritage.



The Burren Pine Project
Re-establishing nursery sites of the native Irish pine.



ReFarm

ReFarm is a results-based, farmer-centred initiative designed to accelerate the delivery of *nature-positive* actions on Irish farms, while ensuring farmers are fairly rewarded for the environmental outcomes they generate.



New in 2025

ReFarm is a results-based, farmer-centred initiative designed to accelerate the delivery of nature-positive actions on Irish farms, while ensuring farmers are fairly rewarded for the environmental outcomes they generate. Launched as a pilot in 2025, the project worked with 65 farms across Ireland, including 35 *Farming for Nature (FFN)* farmers drawn from the Ambassador network and the Horse's Mouth mentoring programme, spanning 21 counties. ReFarm demonstrates how flexible, outcomes-focused funding can translate rapidly into measurable biodiversity gains on the ground.

Participating farmers could avail of an annual allowance of up to €3,000 to support the delivery of locally appropriate actions, selected by the farmer and tailored to their holding. Importantly, payments were structured to recognise outcomes as well as actions, reinforcing farmer agency and practical decision-making. A streamlined invoicing and prompt payment system was established, with payments typically issued within one week of submission, addressing a common barrier to farmer participation in environmental schemes.

To date, more than 130 actions have been completed under ReFarm. These include the creation of 15 new ponds, with an average size of 332 m², alongside the support and self-assessment of 20 existing ponds established in 2024. Approximately 2 km of new hedgerows have been planted (averaging 128 m per farm), along with 1.7 ha of mixed woodland copses. The project also supported 49 ha of species-rich

grassland, most of which was scored by farmers themselves, reflecting ReFarm's emphasis on farmer-led assessment. In addition, 21 bespoke "farmer's choice" options were funded, ranging from swift boxes and bat and owl boxes to wildflower meadows, habitat restoration, and moth trapping.

Burrenbeo Trust plays a central role in ReFarm's action delivery, working directly with farmers to translate project principles into practical outcomes on the ground. Burrenbeo has coordinated farmer engagement, supported action planning, and provided targeted advice through remote consultations, advisory clinics, and selected site visits.

This delivery role builds on Burrenbeo's extensive experience with results-based approaches and farmer-led conservation, ensuring actions are both ecologically meaningful and workable within commercial farming systems.

ReFarm is funded primarily through private sources, including *Brightwind*, *CIE Tours*, *RWE* and *John Paul Construction*, alongside foundation support from *CFI* and public funding via the *Local Biodiversity Action Fund*. Research underpinning the project is being led by *Trinity College Dublin*, with funding from *BiOrbic*, strengthening the evidence base for scalable, results-based agri-environment models.



Did you know?

- The Farming for Nature's latest programme to add to their list, Inside the Gate, had over 1500 people attending 25 farms on one day.
- We now have Schools and Groups from every county in Ireland that have taken part in Heritage Keepers!
- The Hare's Corner book was launched in September in 2025 highlighting the quiet, hopeful revolution taking place across Ireland – where people are making space for nature to thrive once again.
- For the first time, Winterage Weekend featured two cattle drives, helping us reach a record 1,100+ tickets sold across all festival events.

Deepening our social connections

In 2025, Burrenbeo Trust undertook a focused piece of research to better understand the social impact of our work within the Burren and surrounding communities. Drawing on staff interviews, conversations with local organisations, structured event observations, and a review of participant feedback across multiple programmes, the assessment provided a rich, evidence-based picture of how our work is experienced on the ground.

The findings reaffirmed that our programmes do far more than deliver learning or conservation outcomes, they create deep and lasting social value. Across events, programmes and volunteering, people consistently described feeling welcomed, part of a community and inspired to take

action. The research highlighted that our warm, community-based approach fosters belonging, wellbeing, and intergenerational connection in ways that are both meaningful and rare.

From children discovering their heritage to volunteers rolling up their sleeves to care for the Burren, and farmers sharing traditions during Winterage, a clear story emerged: ***Burrenbeo's work strengthens the social fabric of the region.***

Participants spoke about feeling part of something bigger, connected to the land, to local culture, and to one another, showing that the impact of our work is not only ecological or educational, but profoundly social. Burrenbeo will use these findings and recommendations to guide future planning, ensuring our work remains inclusive, responsive, and deeply rooted in the communities we serve.

What our participants say

Calf and Cuckoo

My son came home today full of stories of your *Calf & Cuckoo* presentation at their school. Thank you! He absolutely loved it, and found it so interesting. He has dyslexia and doesn't find school easy, but was so excited by the talk today! You made a huge impact on him.

Parent, Ennistymon NS

The Winterage Weekend

Magical. Increased appreciation of the uniqueness of the Burren landscape, its nature and its people.

Burren in Bloom

Attended the hazelwood walk. It was simply wonderful to learn so much in most gorgeous surroundings. Thank you!

Heritage Keepers

I found the programme to be one of the best that we have taken part in as a school. It gave us the opportunity to learn about our area and all its magnificent features. Although a small area, the children's pride in it has grown hugely. It has been a wonderful journey for us all. Thank you.

Teacher, Co Clare

Actually feeling the heritage around you... it's amazing. What Heritage Keepers is doing is so important: Getting people to fall in love with their local place. It's the only way we'll ever stand up and protect it.

Community Participant, Co Galway

Hare's Corner

The support we had from Hare's Corner in creating our wildlife pond has been excellent and invaluable. The funding process was quick and easy and the grant was a great help in covering the costs. Even more important was what we learned about pond construction from the site visit and the video resources we were given, enabling us to create a clear plan for our digger operator.

Private Landowner, Co Sligo

I have had the most positive experience with The Hare's Corner. Alas I am not articulate enough to convey the impact the few hours spent with Dr Parr have had on my outlook to how I will manage the farmland over the next few years. Her tremendous knowledge, willingness to share information and the offer of sound, practical advice and then to turn all that into a super report - that will be my bible. I barely knew it was lashing rain on the day of her visit. Since receiving the Plan for Nature, the actions I have taken so far: Collected hay rattle seeds, maintained a pile of bushes and preparing owl/kestrel boxes.

Farmer, Co Galway

Farming For Nature's mentorship programme

So lovely to have a fellow farmer visit the farm and pass on his knowledge to help me in my journey to grow biodiversity which to me has a huge value; environmentally, financially and socially.



Meet the team:

The Burrenbeo Trust team consists of various paid part time staff and voluntary advisors.

Board of Trustees



SADIE CHOWEN
Chairperson



KAREN BLAKE
Treasurer



DAIRE O'CRIODAIN
Director



MICHAEL DAVOREN
Director



HELEN MCQUILLAN
Director



MARGARET MACMAHON
Director



CATHAL O'DONOGHUE
Director



GEAROID HOWARD
Director

2025 STAFF AND PROJECT TEAMS



AILBHE DOYLE
Programme Support Officer
ailbhe@burrenbeo.com



DR ÁINE BIRD
CEO
aine@burrenbeo.com



BRIAN NALLY
Events Coordinator
brian@burrenbeo.com



BRIGID BARRY
Farming for Nature Coordinator
info@farmingfornature.ie



FIONN DOYLE-CHOWEN
The Hare's Corner Officer
fionn@burrenbeo.com



JOHN LAMBE
Finance Manager
john@burrenbeo.com



KAREN VAN DORP
Conservation, Outreach and Membership
karen@burrenbeo.com



KATIE CONWAY
Administration Officer
katie@burrenbeo.com



LEE WORRELL
The Hare's Corner Coordinator
lee@burrenbeo.com



LYDIA LISHMAN
Farming for Nature Programmes and Development Officer
lydia@farmingfornature.ie



MARY DILLON
Heritage Keepers Coordinator
mary@burrenbeo.com



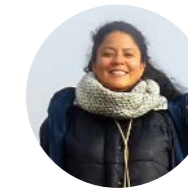
PRANJALI BHAVE
Impact Research
pranjali@burrenbeo.com



ROB Ó FOGHLÚ
Development & Partnerships
rob@burrenbeo.com



SARAH COONAN
Farming for Nature Network & Communications
sarah@farmingfornature.ie



SHEILA SANTOS
Farming for Nature SEO & Digital Strategy Lead
sheila@farmingfornature.ie



BRENDAN DUNFORD
Volunteer
info@farmingfornature.ie



A Big thank you to

Members, Volunteers, Supporters, Partners & Funders

FOUNDATIONS, PARTNERSHIPS & SPONSORS

Aldi
 Analog Devices, Inc
 Brightwind
 B&R Wind Ltd
 BTH Giving Fund
 Co-Centre Climate & Biodiversity,
 Trinity College
 Community Foundation Ireland
 E.I. Electronics
 E.S.B.
 FBD Trust
 Greencoat
 Lifes2Good
 Intact Insurance (123.ie)
 SSE Renewables
 Sunflower Community Foundation
 NTR PLC
 Wolters Rundreisen

PRIVATE DONORS

Daire Ó Criodáin
 Jane Clarke
 Jess Gates
 Maria & Jim Torpe
 Michael & Clodagh Lynch
 Pauline Byrne
 Sandy Morrell
 Tom Arnold

BURREN PINE PROJECT

Applegreen
 Gach Rud Kombucha
 Shelley McNamara

GRANT FUNDERS

Clare Co. Council
 Clean Coasts
 Creative Communities Clare
 Department of Agriculture, Food & Marine
 Department of Climate Energy & Environment
 (Geological Survey Ireland)
 Department of Education ESD
 Department of Social Protection
 Galway & Roscommon Education &
 Training Board
 Local Biodiversity Action Fund - Co. Carlow
 Local Biodiversity Action Fund - Co. Limerick
 Local Biodiversity Action Fund - Co. Meath
 Local Biodiversity Action Fund - Co. Offaly
 Local Biodiversity Action Fund - Co. Sligo
 Local Biodiversity Action Fund - Co. Galway
 Local Biodiversity Action Fund - Galway City
 Mayo Co. Council
 National Monuments Service via HNVS
 National Parks and Wildlife Service
 Wicklow Co. Council

GRANT FUNDERS



GOLD BUSINESS MEMBERS



SILVER BUSINESS MEMBERS



BUSINESS MEMBERS





burren**beo**trust
connecting people and place

Burrenbeo Trust, Glebe House,
Glebe Road, Kinvara
Tel. 091 638096
Email. info@burrenbeo.com
www.burrenbeo.com

www.heritagekeepers.ie
www.thehahscorner.ie
www.farmingfornature.ie